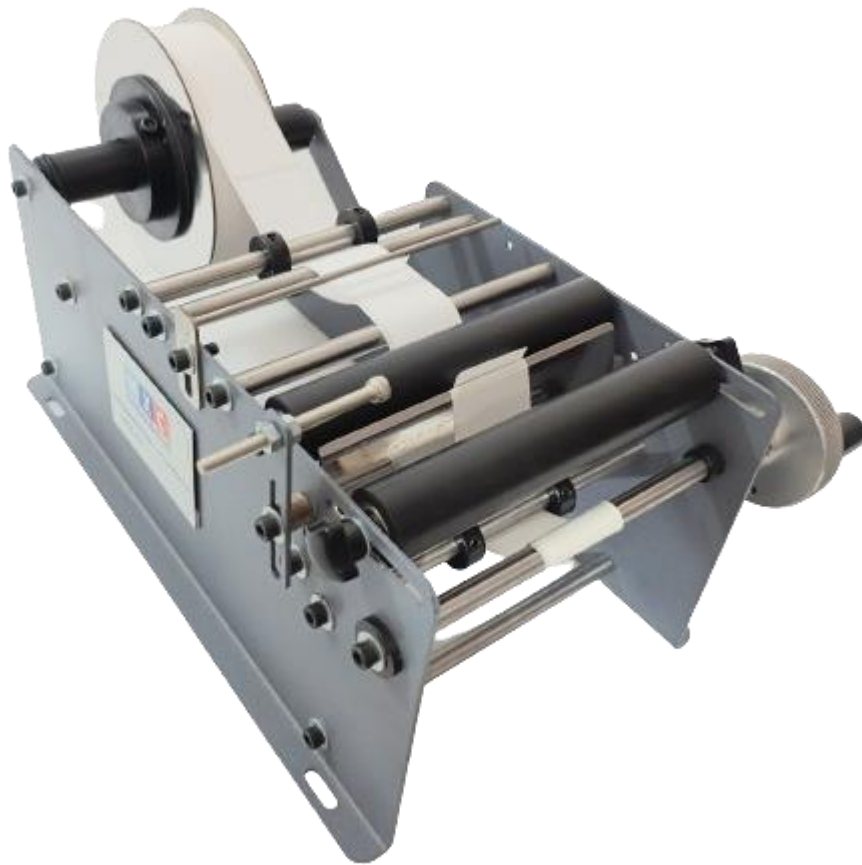


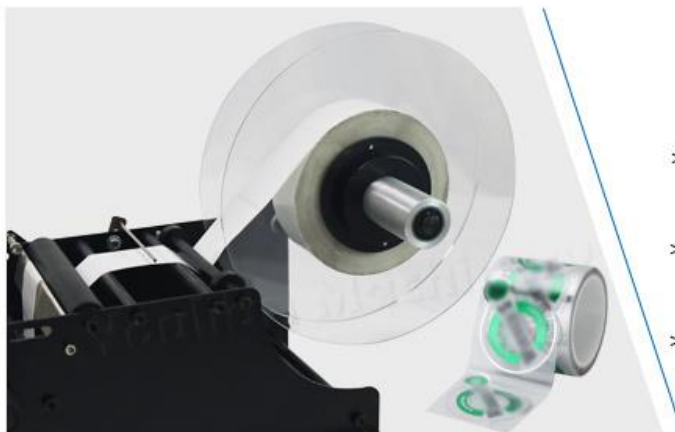
MXC PACKAGING MACHINES SOLUTION

[PRODUCT CATALOGUE]



MANUAL ROUND BOTTLE LABELLING MACHINE

MXC-20-120-RB-01

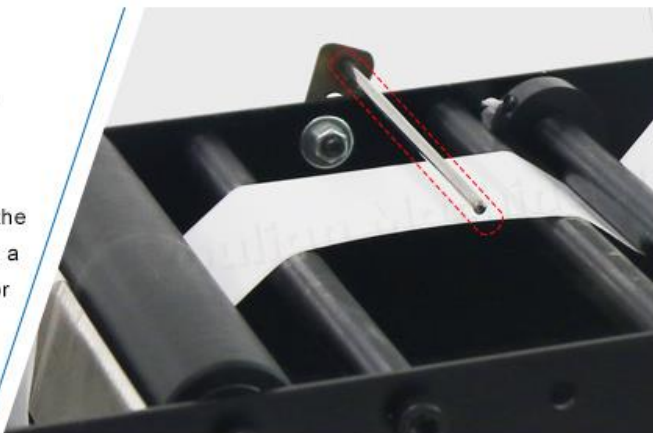


▶ **Label Feeder**

- > Suitable Label Size:
10-110mm(W) x 10-250mm(L)
- > Label feeder can be adjusted according to label size.
- > It can be also used for transparent labels.

▶ **Reference Designator**

- > When this bar stays on the gap between the two labels, it means that you have attached a sticker, which is used to remind the operator to make the labeling more accurate.



▶ **Rubber Roller**

- > Suitable Bottle Size:
Diameter: 15-120mm; Height: ≤150mm
- > Please make these two rollers parallel

▶ **Manual Handle**

- > Labeling speed: ≤30 bottles/min



Description: -

Manual Round Bottle Labeling Machine, Adhesive Sticker Label

Features: -

Small size only needs a little space, easy to move.

Save your time and workers a lot.

Specifications:

Model: MXC-20-120-RB

Product Type: Manual Labeling Machine

Brand: M X C

Type: Self-adhesive labeling machine

Packing type: cans, bottles

Speed: 20-25 times/min

Accuracy: +/-0.5 mm

Label Roll inner diameter: ≥75 mm

Label Roll Out diameter: ≤180 mm

Bottle diameter: 30-120 mm, Height ≤150 mm

Label width: 10-140 mm

Label Length: 10-300 mm

Machine Dimensions (L x W x H): 400 X 240 x 210 mm (Approx.)

Weight: 5 kg (Approx.)

Applications: -



Applicable objects: Alcoholic Beverages, Juice drinks, Hair care products, Mineral water, Purified water.

Suitable for round bottle labeling of PET bottles, plastic bottles, glass bottles, metal bottles, round cans, cylinders, etc.

Widely used in cosmetics, beverage, foodstuff, food, medical industries.